

KINTETSU GROUP HOLDINGS

COMPANY PROFILE



To respond swiftly to changes in the business environment and achieve further growth, we operate a diverse range of businesses that support everyday life under the umbrella of Kintetsu Group Holdings Co., Ltd., including transportation, real estate, international logistics, merchandise sales, and hotel and leisure operations. Each company in the Group will make every effort to meet customer expectations and, through close cooperation among Group companies, fully leverage the collective strengths of the Group.

We will continue to support the everyday lives of our customers with sincerity, create new value that brings joy and enrichment, and contribute to the sustainable development of society.



Transportation Business



Hotel and Leisure Business



Real Estate Business



Merchandise Sales Business



International Logistics Business



TRANSPORTATION

With our well-developed transportation network and capacity, we connect towns with towns and people with people.



Railway Business



Kintetsu Railway



Yoro Railway

Kintetsu Group operates several railways, including Kintetsu Railway, which runs on a total track length of approximately 500 km. Covering six prefectures in the Kinki and Tokai regions, we offer interurban, sightseeing and regional transportation services for commuters, tourists and other passengers. We constantly strive to meet customers' various needs by improving our operation safety level, expanding barrier-free facilities, and utilizing advanced technologies such as AI and IT systems for station management, to provide safe and comfortable transportation services.

Bus and Taxi Business



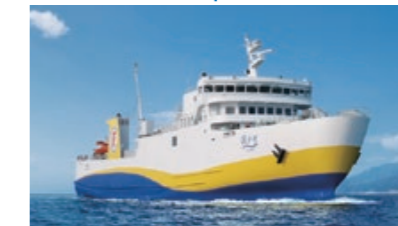
Kintetsu Bus



Kintetsu Taxi

We manage bus and taxi companies in the Kinki, Tokai, Hokuriku, Chugoku, Shikoku, and Kyushu regions. Our bus companies run long-distance buses bound for various parts of Japan, sightseeing buses, and fixed-route buses for local residents. With dedicated taxi stands installed at stations, hotels and hospitals, our taxi companies offer services that satisfy customers' needs.

Marine Transportation Business



Kokudo Kyushi Ferry



Shima Marine Leisure

In the field of marine transportation, the Kokudo Kyushi Ferry runs along the shortest route between Shikoku and Kyushu. In the Ise-Shima area, we operate leisure boats that navigate Toba Bay, the sailing leisure boat Esperanza cruising in Ago Bay, and liners linking Kashikojima and Wagu.

Ropeway Business



Gozaisho Ropeway

We operate ropeways on Mt. Katsuragi (in Nara), Mt. Gozaisho (in Mie), and Mt. Tsurumi (in Oita).

Car Rental Business



ORIX Rent a Car

Kintetsu Rent-A Lease operates as an "ORIX Rent a Car" franchisee, operating 16 stores and two car-sharing stations, mainly along Kintetsu lines.



REAL ESTATE

We advance a new, vibrant lifestyle that brings you greater happiness and amenities.



Real Estate Sales Business
(Condominiums and Detached Houses)



Laurel Tower Sakaisuji Honmachi
We offer residences under four brands—"Laurel Court," "Laurel Square," "Laurel Tower," and "Laurel i"—each designed to propose safe and high-quality living tailored to diverse concepts, development scales, locations, and customer lifestyles. Additionally, to promote environmentally responsible housing development, we are standardizing ZEH-M Oriented Specifications and advancing the acquisition of low-carbon building certification.

Office Building and Commercial Facility Operation Business



Uehommachi YUFURA
We develop office buildings primarily in the Kinki and Tokyo metropolitan areas. In addition to offering prime locations suitable for business hubs, we provide highly functional office environments incorporating earthquake-resistant design, disaster preparedness systems, and advanced security features. We also develop and operate commercial facilities in prime locations mainly along the Kintetsu Railway lines, including Abeno Harukas, Uehommachi YUFURA, and PARADIS Gakuummae.

Housing Business



"Sumai to Kurashi no Puratto HOME" Yagi Store

Through "Sumai to Kurashi no Puratto HOME," a one-stop platform that consolidates information from our brokerage, renovation, and detached home businesses, we provide customers with integrated housing-related information. We have established a circular real estate model covering information gathering, acquisition, renovation, rebuilding, and sales, allowing us to address all aspects of our customers' housing and lifestyle needs.

Overseas Business



Dallas, Texas, USA - Rental apartment complex

We invest primarily in the United States and Australia and have established a local subsidiary in Torrance, California, to strengthen and expand our business foundation in the U.S. We will continue to invest in a diverse range of asset types, primarily in these markets.

Leisure Business



Shima Green Adventure (Shima City, Mie Prefecture)

We operate "Shima Green Adventure," an activity resort that makes full use of the scenic views of Ago Bay and the natural surroundings of a former golf course. The resort consists of the "Glamping Field," which offers an extraordinary lodging experience, and the "Attraction Field," where guests can enjoy outdoor activities while immersing themselves in nature.

Agricultural Business



Tomato juice "HANAYOSHINO"

We produce medium-sized, naturally sweet tomatoes at "Kintetsu Farm Hanayoshino" in Oyodo-cho, Nara Prefecture. We also produce and sell "HANAYOSHINO," a premium tomato juice pressed whole from tomatoes grown on our farm.

We provide the best one-stop logistics solutions tailored to each customer.



International Air Freight Forwarding



This is a service of transporting cargo by plane, which enables us to quickly transport high-value-added products, urgent freight, etc. The major items that we handle include electronics, such as semiconductors and portable terminals, luxury brand products, automotive parts, and medical devices. Leveraging our worldwide network, we have gone beyond airport-to-airport transportation, providing door-to-door intermodal transportation services.

International Sea Freight Forwarding



This is a service of transporting cargo by sea. Making use of container ships, bulk carriers, etc., we deliver cargo of all sizes that encompass a wide range of items, including raw materials, industrial goods, goods for everyday life and plant equipment. As with our international air freight forwarding, we provide intermodal transportation services, including customs brokerage in the countries of origin and destination.

Logistics



We mainly handle third-party logistics (3PL) services whereby we undertake our customers' logistics operations. Using our warehouses across the globe as our base of operations, our services include not only transportation and delivery but also inventory management and distribution processing, such as packaging, product inspection, and labeling. We provide logistics solutions and services that ensure that your goods are delivered when they are needed in the amount they are needed to where they are needed.

KWE's Global Network

Kintetsu World Express has established a management structure divided into six business segments to further advance its global service offerings, enhancing both operational efficiency and organizational agility.



KWE Group 655 locations in 294 cities in 44 countries (as of the end of March 2025)

MERCHANDISE SALES

With a wide variety of services that fulfill customer demands, we offer new value and satisfaction.



MERCHANDISE SALES



Department Store Business



Kintetsu Department Store Main Store Abeno Harukas



Kintetsu Department Store Nara "Yamatoji Shop"

Under the theme "Continuing to create and provide new value to customers," the Kintetsu Group operates Kintetsu Department Store Main Store Abeno Harukas near Osaka-Abenobashi Station and other department stores near Osaka-Uehommachi, Yamato-Saidaiji and Yamato-Yagi Stations and other major stations. We strive to establish new commercial facilities where attractive goods, events and people await so that everyone can spend an enjoyable day.

Retail Business



Supermarket KINSHO Amami Store



Mobile supermarkets TOKUSHIMARU

We operate supermarket businesses in Osaka, Nara, and Kyoto prefectures. As a partner in everyday life, we strive to enrich our customers' dining experiences by providing an attractive selection of products and quality service that deliver great satisfaction.

Stores-within-station-premises Business

We operate many types of shops, including convenience stores, cafes, drug stores, variety stores and high-end supermarkets, primarily in terminal stations, to customers satisfaction.



Time's Place Saidaiji



Gochi Bura Namba

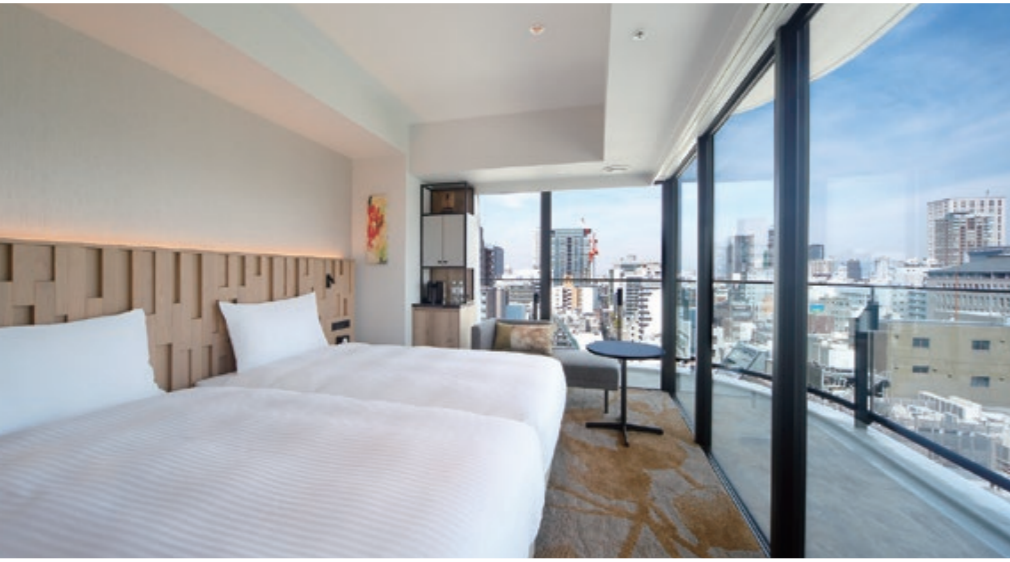
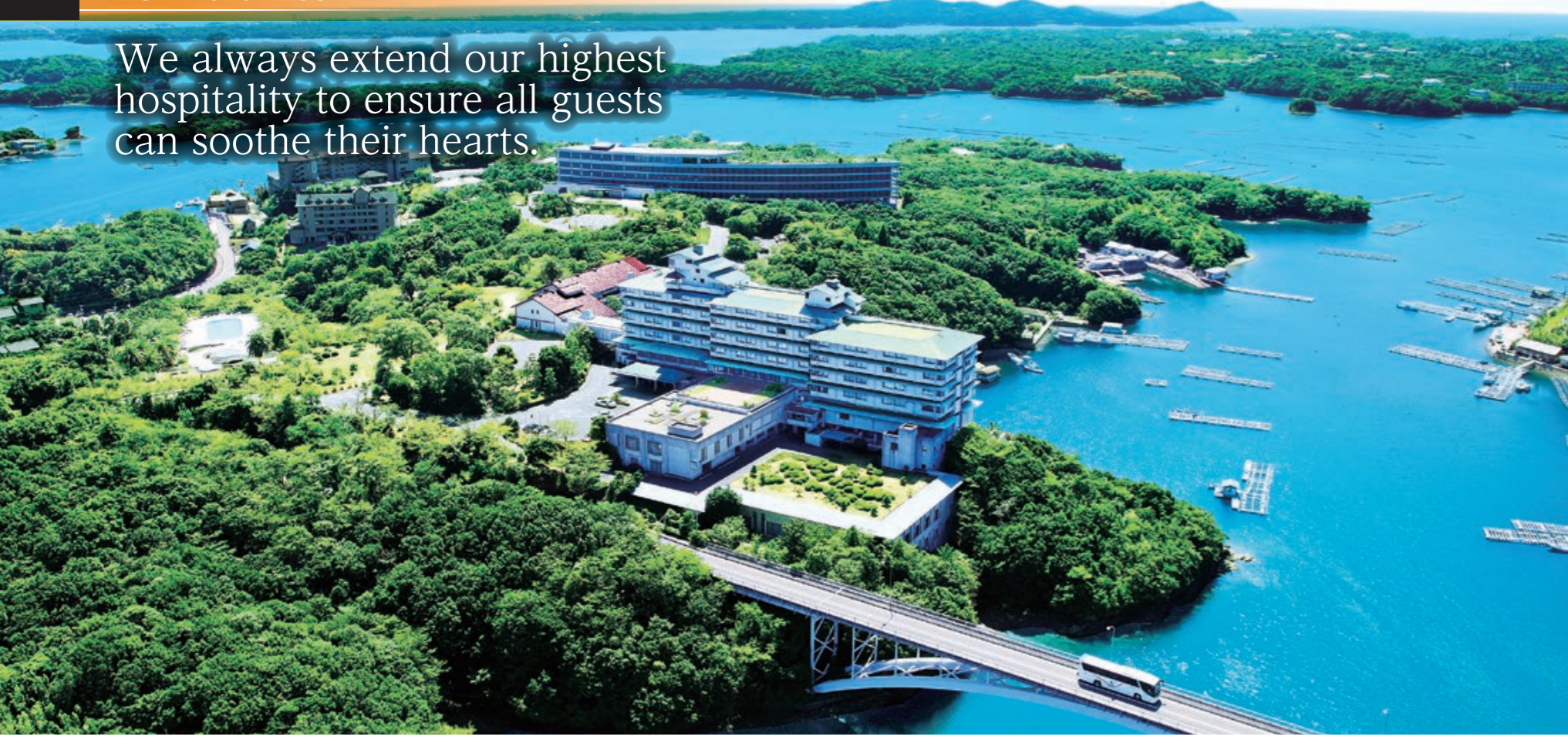
Service Area Business



Kariya Parking Area Bound for Yokkaichi

We operate food courts and souvenir shops at service areas and parking areas along expressways in the Kinki, Chubu, and Hokuriku regions. With an attractive lineup of shops and a wide range of products, we create a comfortable and welcoming environment for our customers.

We always extend our highest hospitality to ensure all guests can soothe their hearts.



Hotel and Ryokan Business

We operate the hotel chain Miyako Hotels & Resorts in Japan and overseas. Attractive services are provided at a total of 24 facilities ranging from urban city hotels to first-class resort hotels, all of which enhance the brand power of "Miyako Hotels & Resorts." We also run elegant ryokan (Japanese-style inns) that offer guests the highest hospitality, allowing them to enjoy the seasonal beauty of Japan.

Realigning the brand of Miyako Hotels & Resorts

We have categorized Miyako Hotels & Resorts into three groups: Miyako Hotel, Miyako City, and Miyako Resort, which will clearly highlight the different service styles among these hotel categories for our customers, and serve as a guideline for our new hotel openings or hotel renovations in the future.

 <p>MIYAKO HOTEL</p> <p>Contemporary luxury, timeless traditions Miyako Hotel, host to an array of distinguished guests throughout the years, is a full-service hotel with a refined modern style.</p>	 <p>MIYAKO CITY</p> <p>The smart choice for city breaks Urban hotels providing a casual way to enjoy the Miyako experience.</p>	 <p>MIYAKO RESORT</p> <p>Taking relaxation to a new level Full-service resort style hotels, offering an enchanting way to refresh mind and body.</p>
--	---	--

Overseas

- Miyako Hotel Los Angeles
- Miyako Hybrid Hotel Torrance, California

Kinki region

- The Westin Miyako Kyoto
- Miyako Hotel Kyoto Hachijo
- Miyako City Kintetsu Kyoto Station
- Sheraton Miyako Hotel Osaka
- Osaka Marriott Miyako Hotel
- Miyako City Osaka Tennoji
- Miyako City Osaka Hommachi
- Hotel Kintetsu Universal City
- Miyako Hotel Amagasaki
- (Traditional Japanese-style inn) Mikasa Ryokan
- (Traditional Japanese-style inn) Nara Tsukihi-Tei
- FOURZ HOTEL KINTETSU OSAKA-NAMBA

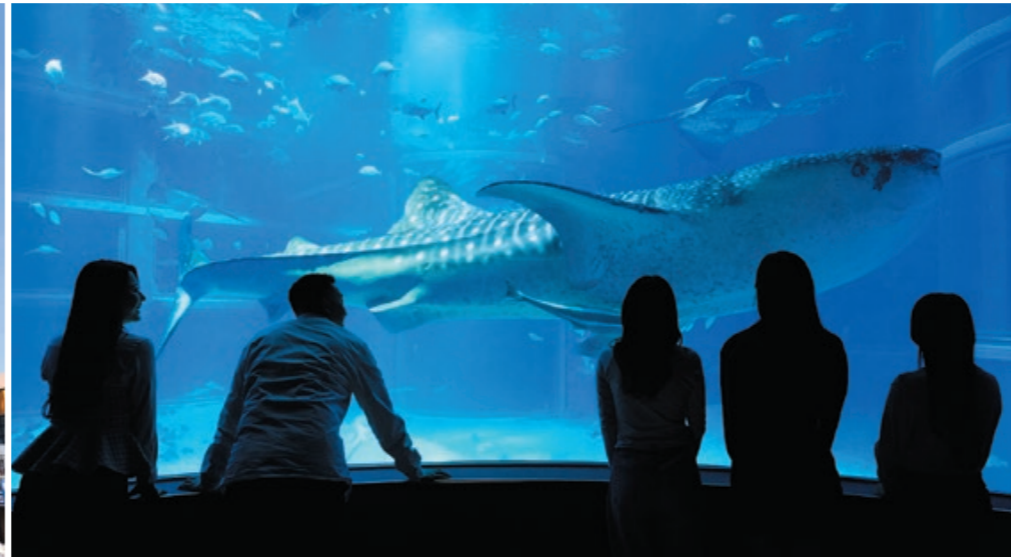


Miyako Hybrid Hotel Torrance, California



Mikasa Ryokan (Nara)

We help customers have an exhilarating time, bringing them lots of smiles and leaving them with fond memories.



Tourism Business

Under the theme of "Providing Memorable Experiences and Encounters for People Around the Globe," we organize tours that ensure safety and peace of mind while creating inspiring stories filled with emotion, smiles, and dreams. Furthermore, to meet increasingly diverse customer needs, we have also launched "Club Tourism Pass," a subscription service to provide on-line content, "Avatar Concierge for Tourists," an on-line animated concierge service which is accessible throughout Japan, and other support.

近畿日本ツーリスト



"Travel Avatar Concierge"



Subscription service "Club Tourism Pass"



"Bonheur," a spacious coach equipped with a vanity and restroom

Leisure Business

We manage an integrated resort facility, whose centerpiece is Shima Spain Village/PARQUE ESPAÑA, a theme park full of Spanish charm with various attractions and shows. The resort facility also includes Hotel Shima Spain Mura and the Ise-Shima Natural Hot Spring "Himawari-no-yu." Among our other leisure facilities are the KAIYUKAN, one of the world's largest aquariums; NIFREL, an interactive "aquazoo"; Ikomasanjo Amusement Park, with a history of more than 90 years, located at the top of Mt. Ikoma; and Abeno Apollo Cinema, a movie theater. These locations serve as popular spots along Kintetsu Railway lines.



Abeno Apollo Cinema



Ikomasanjo Amusement Park



Kintetsu Kashikojima Country Club